

# MONTHLY MEMBERSHIP PROGRESS REPORT

LOCATION NEW ZEALAND

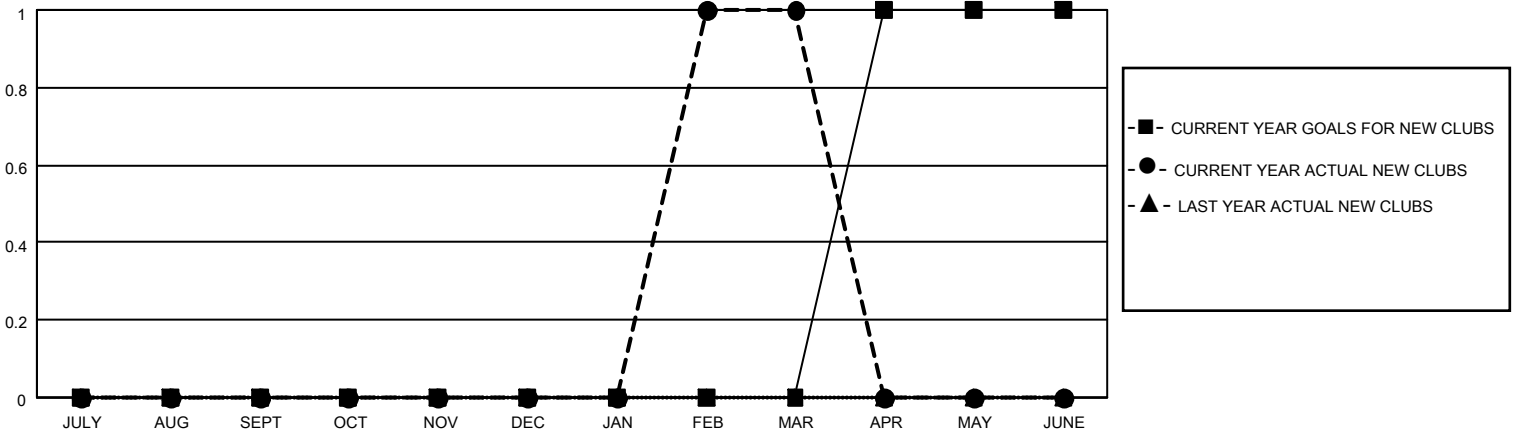
District 202 K

Results as of: 3/31/2021

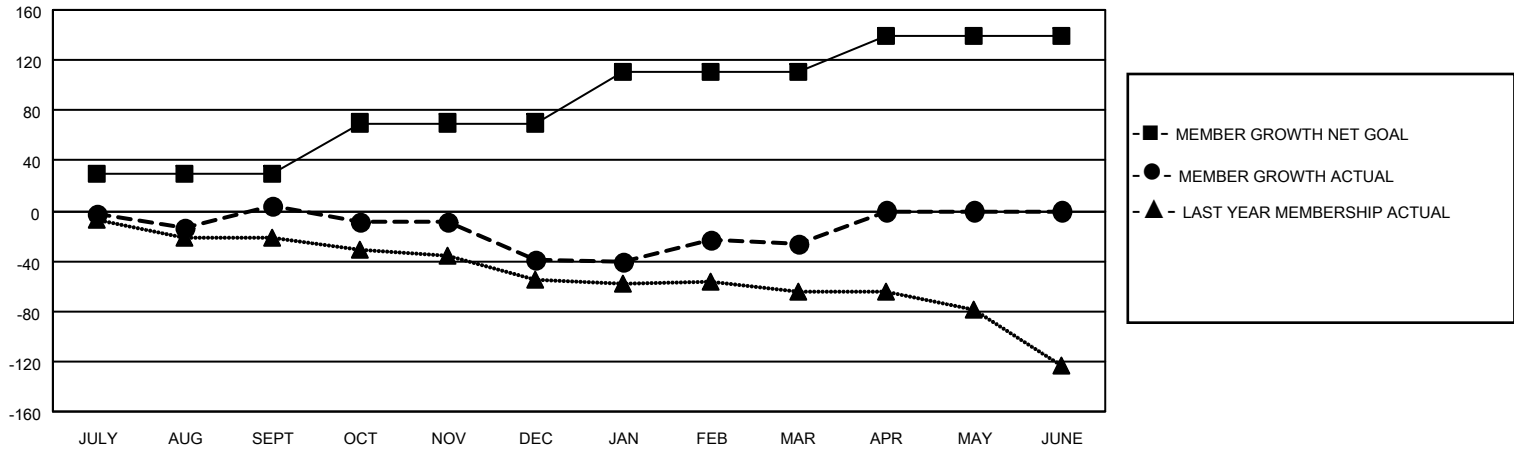
Clubs			
RESULTS FOR 2020-2021			
QUARTER	NEW CLUB GOAL	NEW CLUBS	DROPPED CLUBS
JULY/AUG/SEPT	0	0	2
OCT/NOV/DEC	0	0	0
JAN/FEB/MAR	0	1	3
APR/MAY/JUNE	1	0	0

Members			
RESULTS FOR 2020-2021			
QUARTER	MEMBER GROWTH NET GOAL	MEMBER GROWTH ACTUAL	DROPPED MEMBERS ACTUAL (including transfers)
JULY/AUG/SEPT	30	48	36
OCT/NOV/DEC	40	37	75
JAN/FEB/MAR	40	58	39
APR/MAY/JUNE	30	0	0

**GOALS AND ACTUAL NEW CLUBS CUMULATIVE**



**GOALS AND ACTUAL MEMBERS CUMULATIVE**



DROPPED CLUBS: 5	38 CLUBS OF 72 ADDED 1 OR MORE NEW MEMBERS	<u>GENDER DISTRIBUTION</u>
<u>DROPPED MEMBERS</u>		MALE            865 (63.98%)
DECEASED            14		FEMALE        487 (36.02%)
CLUB CANCELLED       8	<a href="#">CLICK HERE FOR CUMULATIVE MEMBERSHIP DATA</a>	TOTAL FAMILY UNIT MEMBERS            204
OTHER                    128		FAMILY MEMBERS PAYING HALF DUES            103
<b>TOTAL                    150</b>		